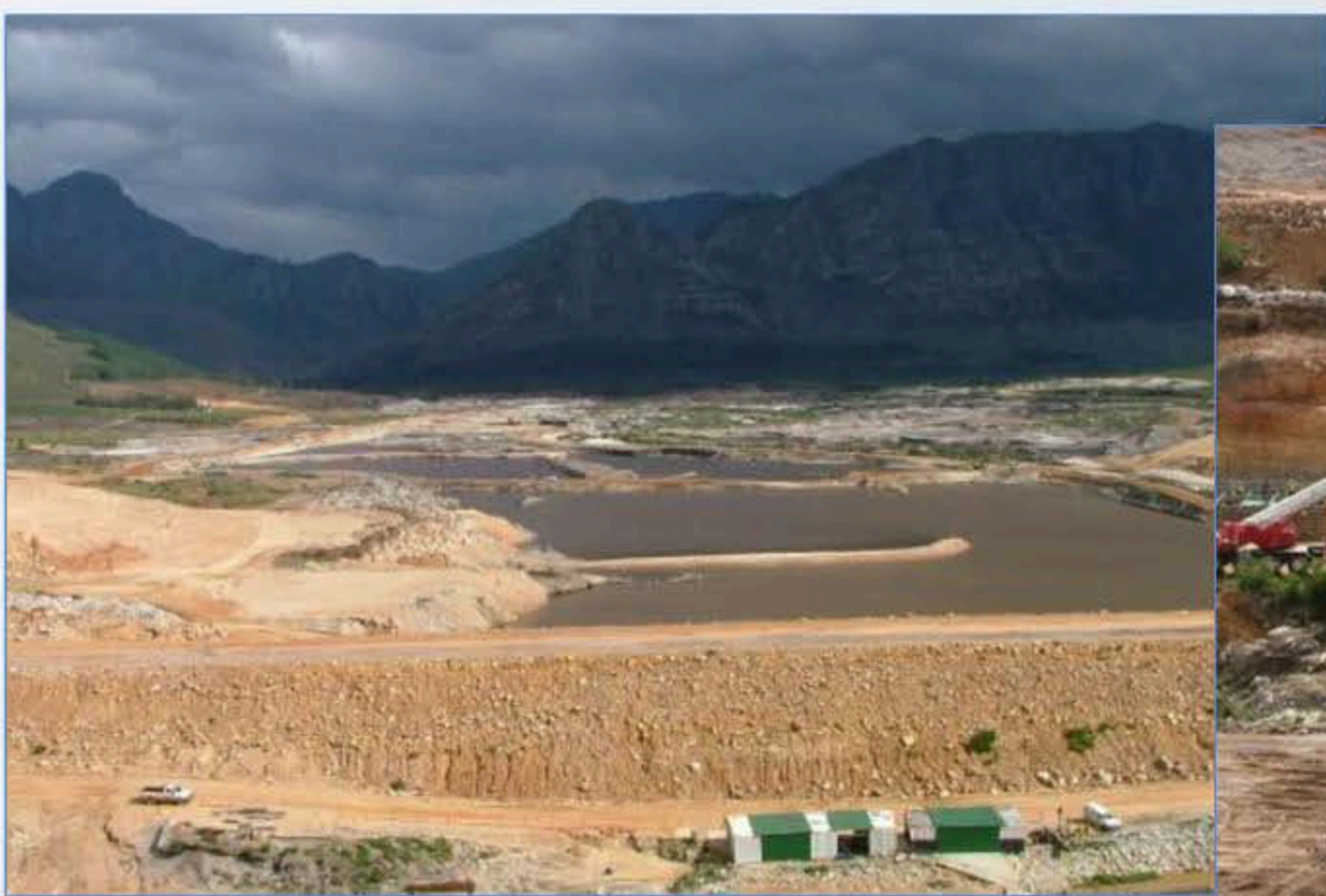
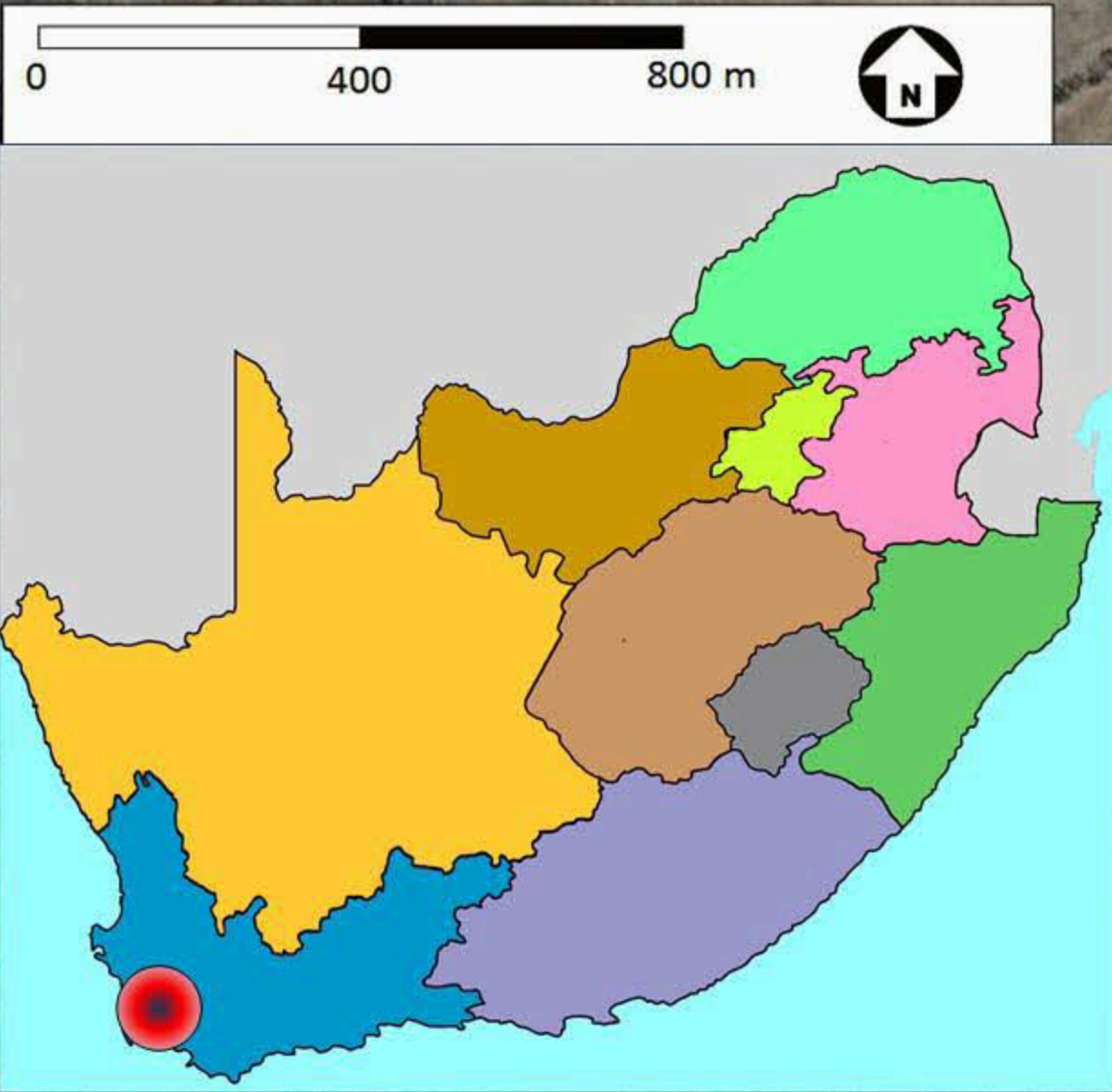
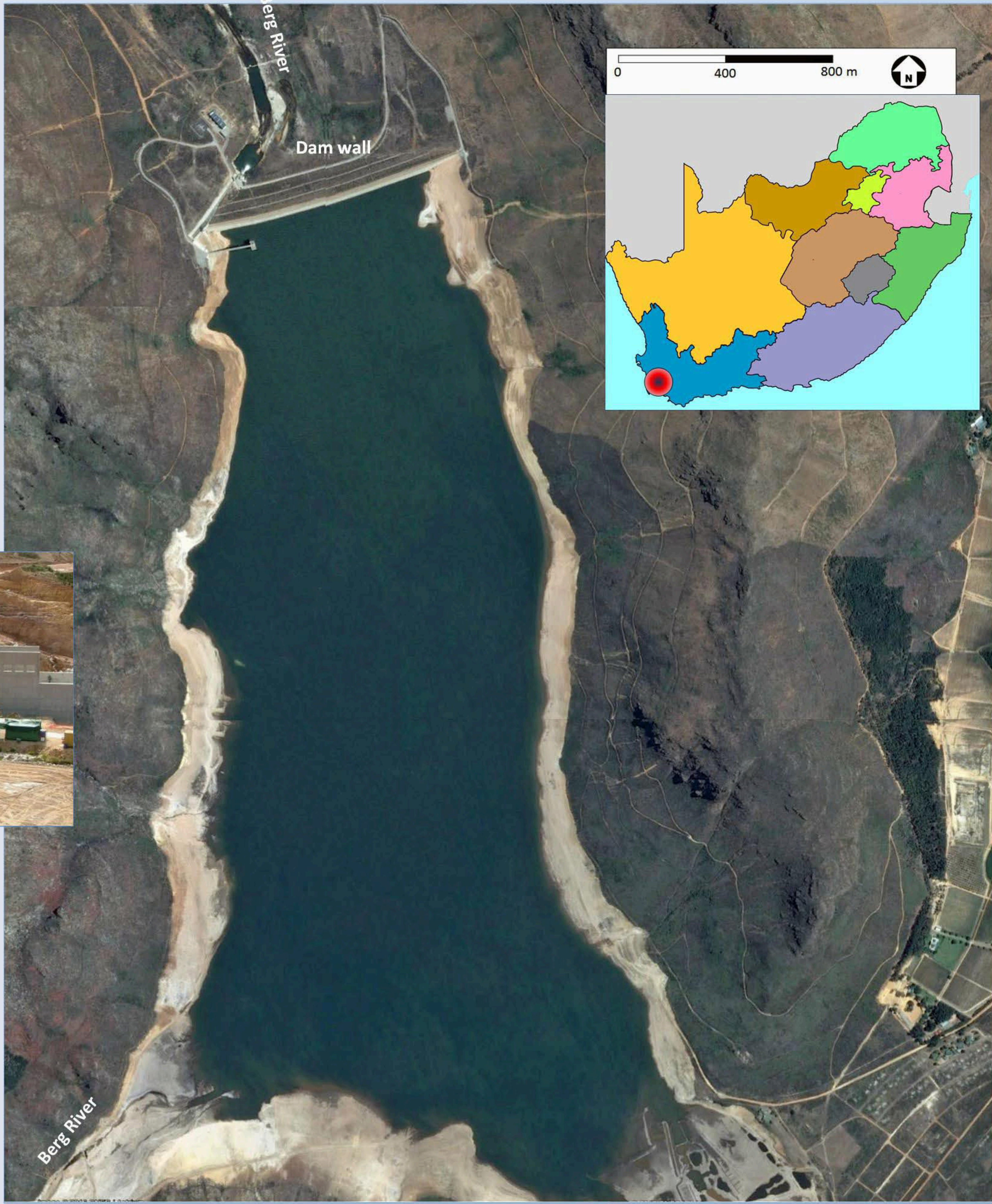


The Berg River Dam was planned in 1906 as part of the total water scheme for Cape Town,

- 50% of the capacity can supply 1.1 million domestic users with water for 1 year (150 liter/person/day).
- The surface area is equivalent to 610 rugby fields.



2004



BERG RIVER DAM (33.90933 S; 19.05695 E)

Completed: 2009 Type of dam: **Rockfill with concrete face.** Capacity: **130 million m³**

Length of wall (top): **929 m** Length of dam (longest distance from wall to inflow): **3.7 km**

Nearest town: **Franschhoek** Surface area: **488 ha**

Water use: **Domestic supply to Cape Town and some towns in the Cape Winelands District.**

Capacity compared to Theewaterskloof Dam (also supplying water to Cape Town) : **3.6 times smaller**

River: **Discharges into the Great Berg River.**

2014



2008 Flood release testing.

References, literature and photos:
References: https://en.wikipedia.org/wiki/Berg_River_Dam
Literature: Van Vuuren, L. (2012). In the Footsteps of Giants. Exploring the history of South Africa's large dams.WRC Publication SP 31/12.
Photos: WAMTechnology cc: Dana Grobler: Faroek Robertson