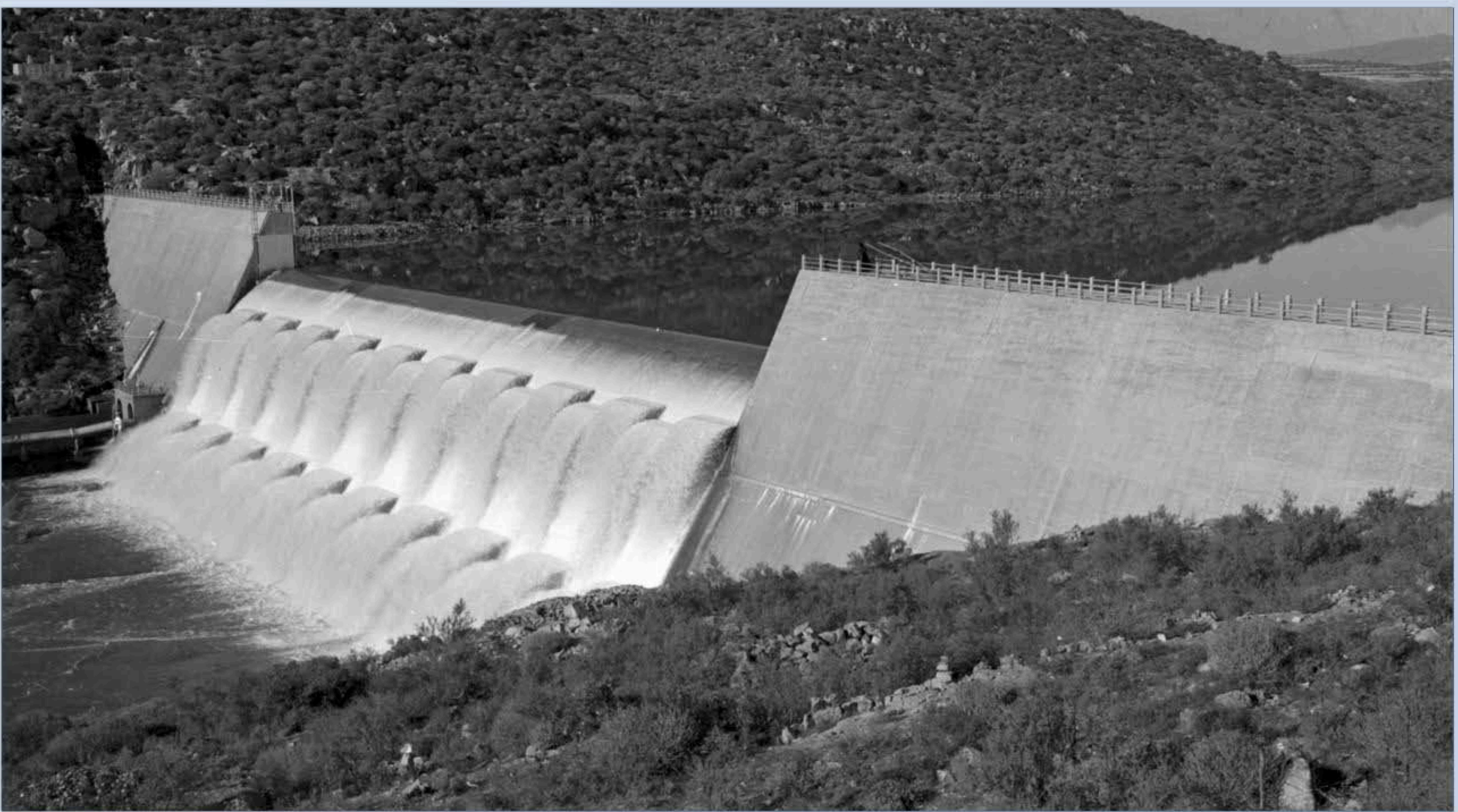
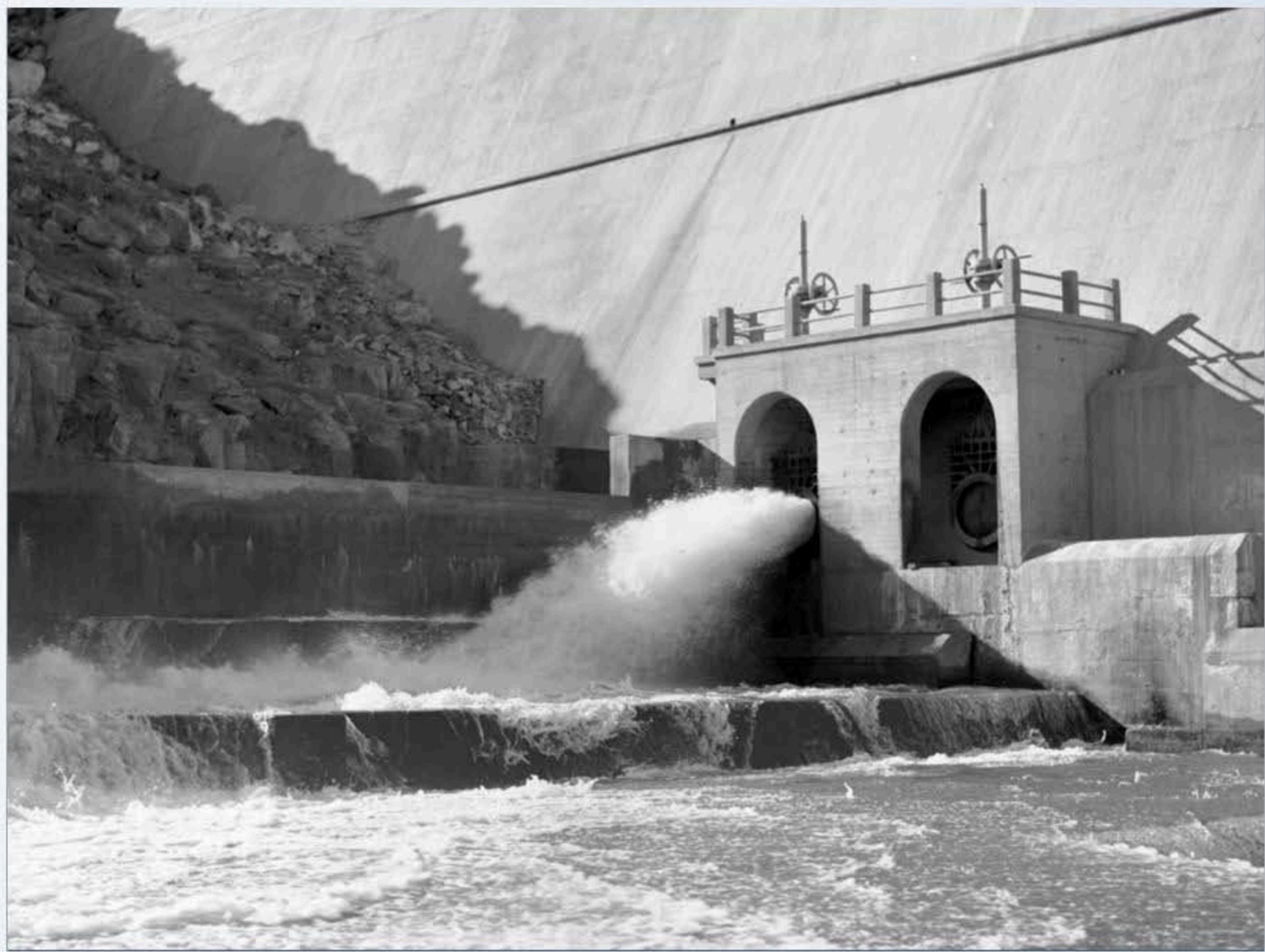


After construction: 1935



1961: Before the wall was raised in 1964.



2007

- 50% of the capacity can supply 1.1 million domestic users with water for 1 year (150 liter/person/day).
- The surface area is equivalent to 1338 rugby fields.

References, literature and photos:  
Reference: Wikipedia ([https://en.wikipedia.org/wiki/Clanwilliam\\_Dam](https://en.wikipedia.org/wiki/Clanwilliam_Dam))  
**Literature:** Van Vuuren, L. (2012). In the Footsteps of Giants. Exploring the history of South Africa's large dams. WRC Publication SP 31/12.  
**Photos:** Department of Water Affairs: WAMTechnology cc

## CLANWILLIAM DAM (32.1845 S; 18.8743 E)

Completed: 1935  
Wall raised: 1964

Type of dam: Concrete gravity dam.

Capacity: 121.8 million m<sup>3</sup>

Length of wall (top): 235 m

Length of dam (longest distance from wall to inflow): 12 km

Nearest town: Hartbeeshoek

Surface area: 1124 ha

Water use: Domestic supply to Clanwilliam. Irrigation.

River: Olifants River