

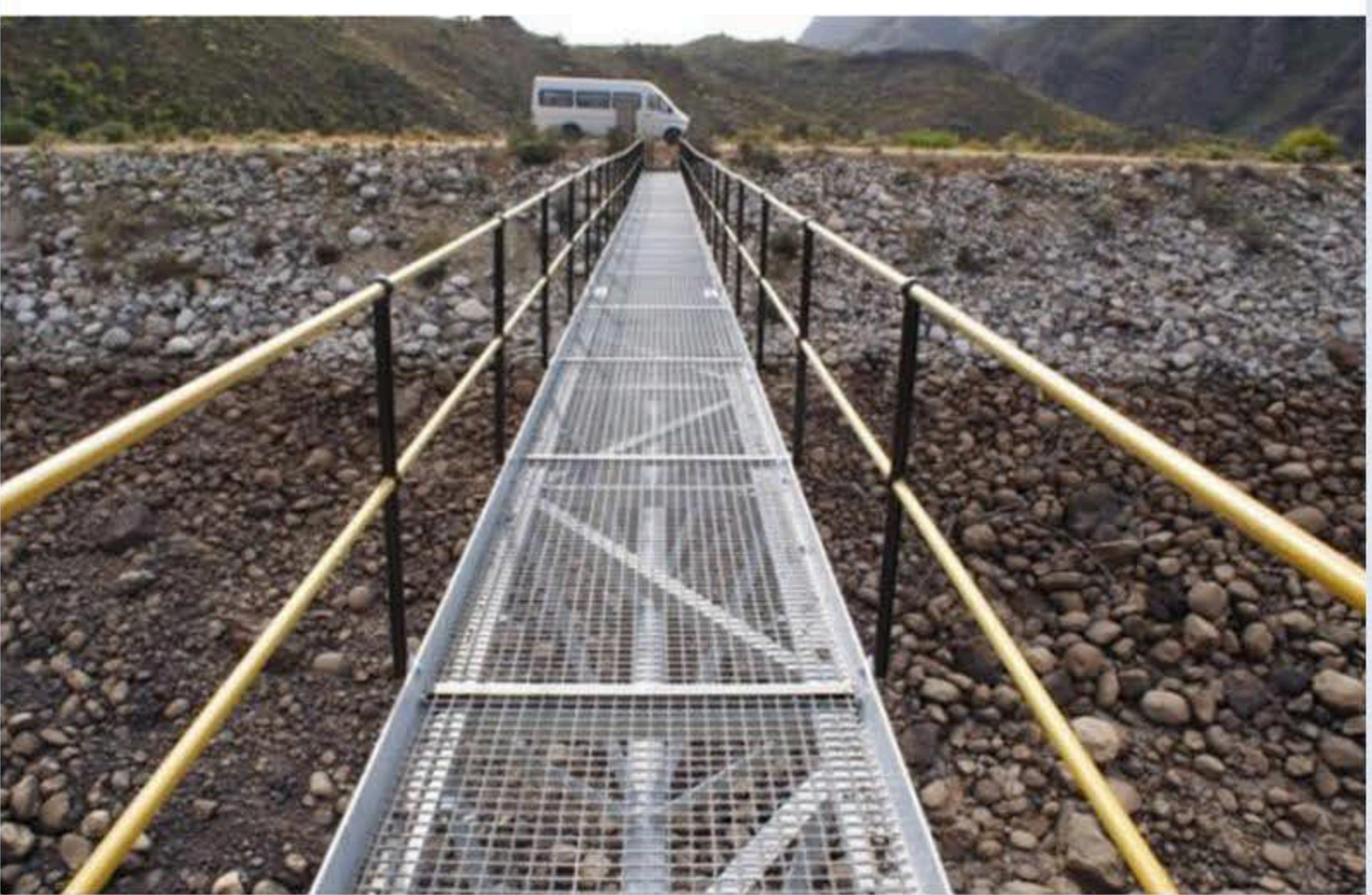
Intake Tower



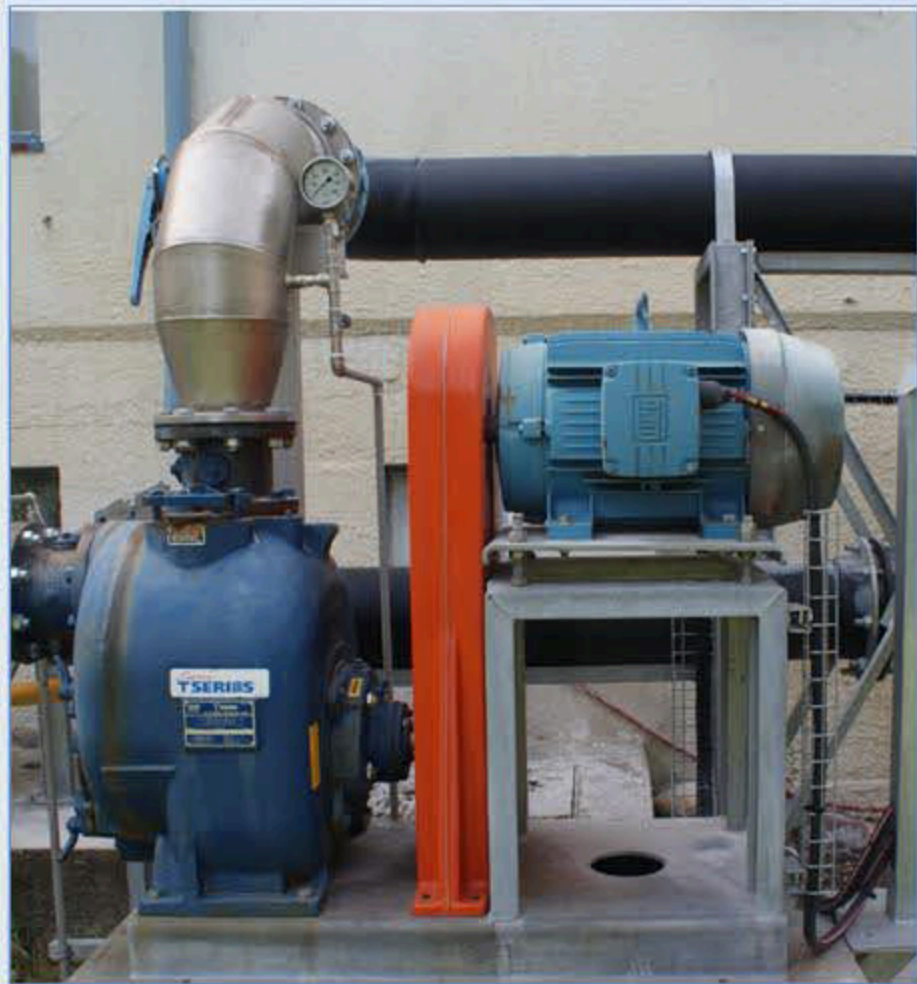
Water treatment and pumps.



Spillway



Stone face wall



STETTYNSKLOOF DAM (33.8367 S; 19.2522 E)

Completed: 1955 Raised: 1981

Type of dam: **Combined earth/rock fill with Stone face.**

Capacity: 15 million m³

Length of wall (top): 250 m

Length of dam (longest distance from wall to inflow): 2.1 km

Nearest town: **Worcester**

Surface area: 90 ha

Water use: **Domestic supply to Worcester and Rawsonville.**

Capacity compared to Wemmershoek Dam (11 km away) : **> 8 times smaller**

River: **Discharges into the Holsloot River a tributary of the Breede River. Inflow from the Stettynskloof River.**

NOTE

- 50% of the dam's capacity can supply domestic water for 140 000 persons per year (at 150 l/p/d).
- The surface area of the dam is equivalent to 112 rugby fields.

References, literature and photos:
Literature: Van Vuuren, L. (2012). In the Footsteps of Giants. Exploring the history of South Africa's large dams. WRC Publication SP 31/12.
Photos: E. Rossouw: WAMTechnology cc