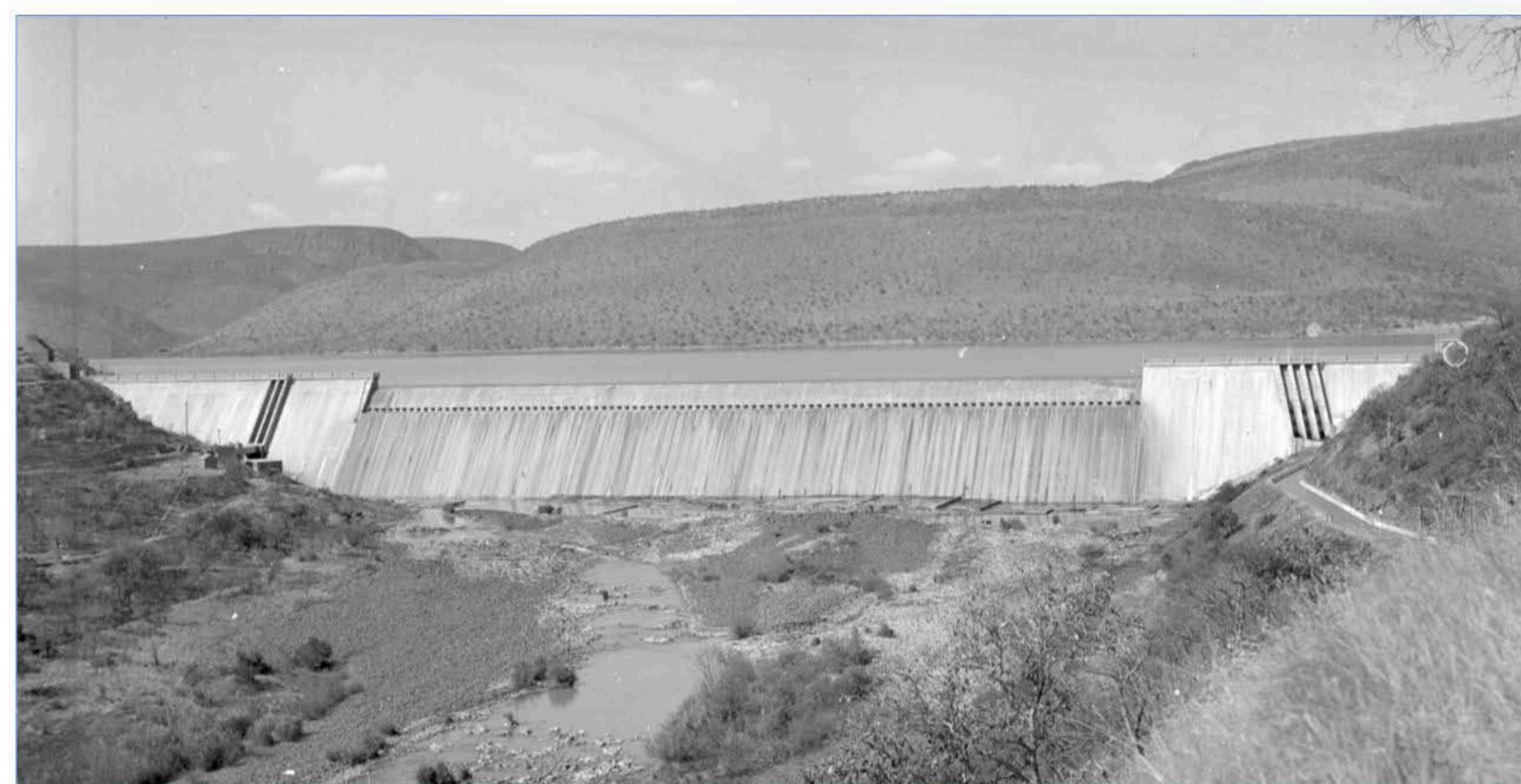
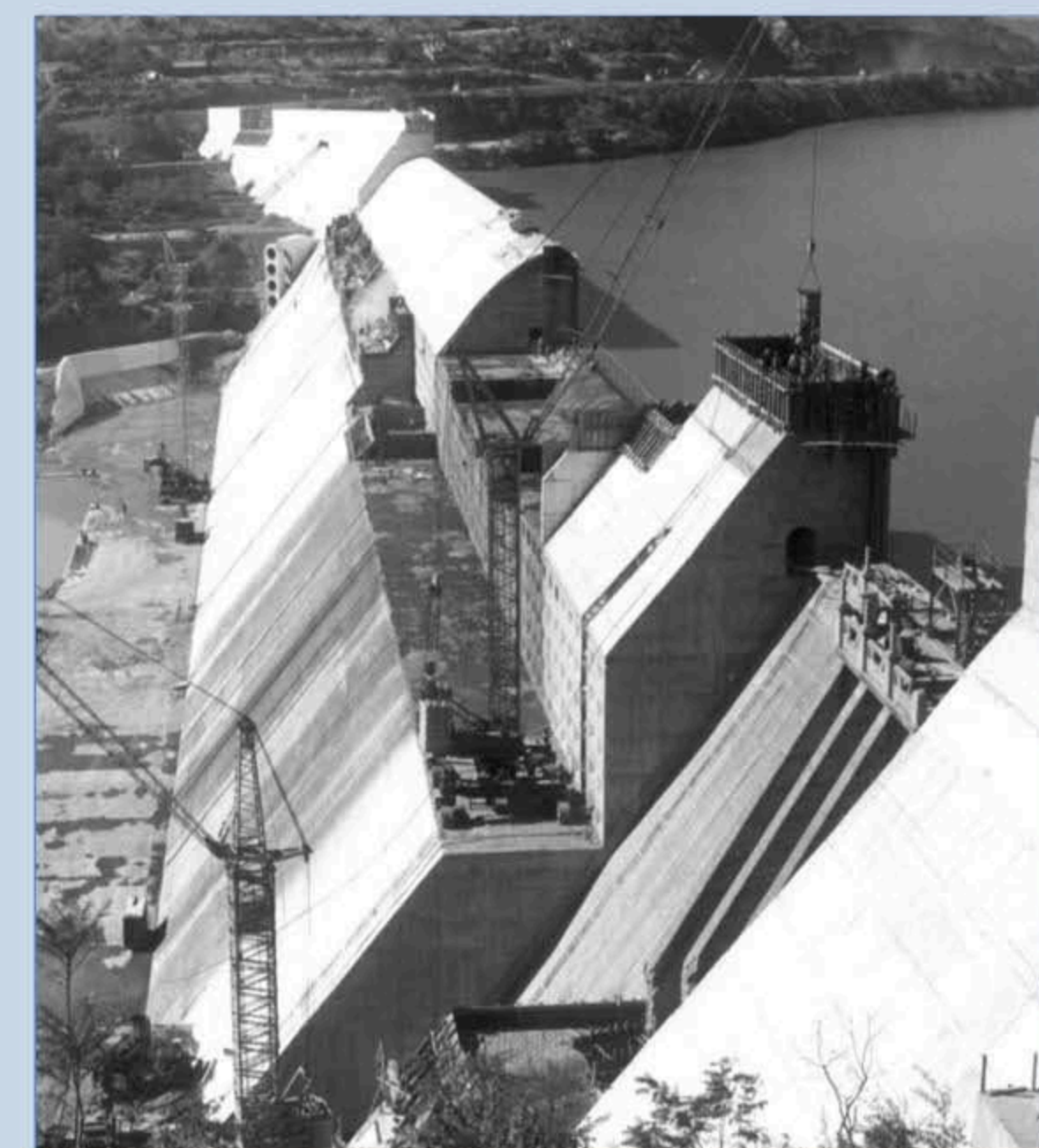
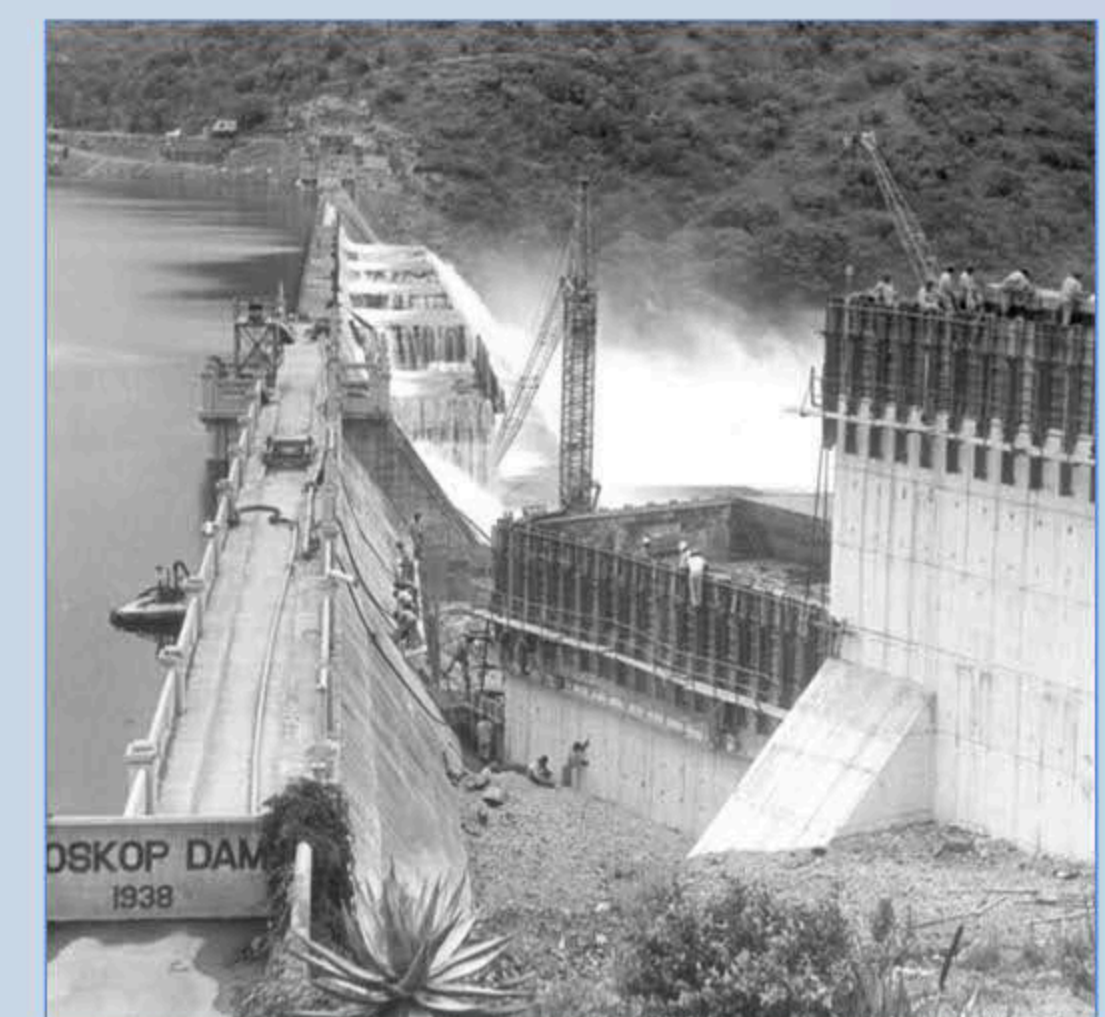


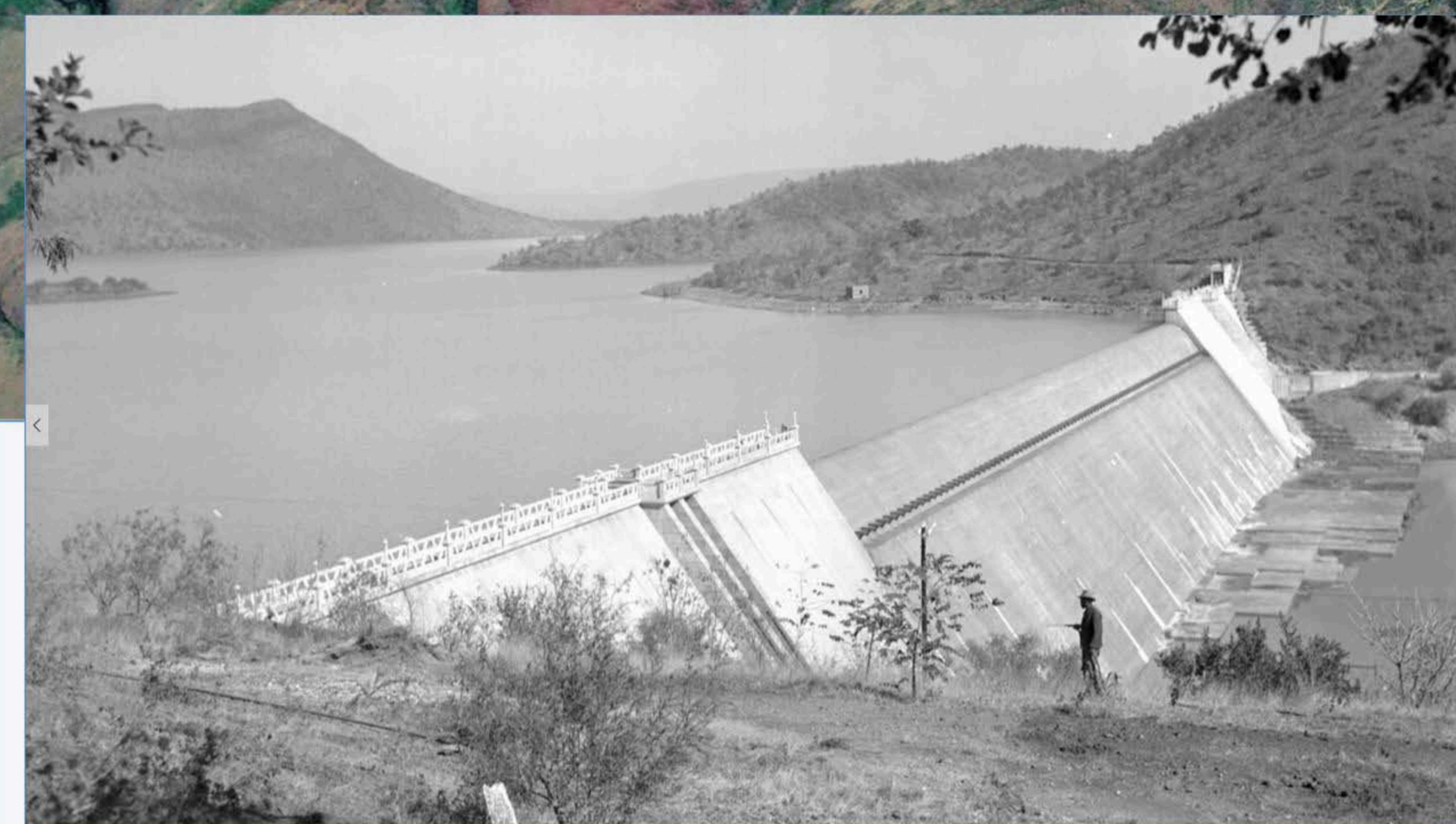


- 50% of the capacity can supply 3.3 million domestic users with water for 1 year (150 liter/person/day).
- The surface area is equivalent to 3000 rugby fields.

The name of the dam relates to one of the farms, Loskop, on which it was constructed. The canal, which runs down the left hand side of the river measures 480km. The Loskop Dam system of canals served about 25 000 ha of farmlands. The dam can supply farmers with water for up to three years without rain. The Loskop Irrigation Scheme resulted in the establishment of a town, Groblersdal, which was proclaimed in 1938. The estimate cost of the entire project was 1.5 million British Pounds.



1940



1947



1961

LOSKOP DAM (25.415315 S; 29.359464 E)

Completed: 1938; Raised: 1979

River: Olifants River.

Capacity: 361.5 million m³

Type of dam: Concrete gravity – arch dam.

Length of wall (top): 497 m

Length of dam (longest distance from wall to inflow): 14 km

Nearest town: Groblersdal – 28 km. Middelburg – 38 km.

Surface area: 2477 ha

Water use: Irrigation.

Capacity compared to the Flag Bosielo Dam also on the Olifants: 2 times larger.

References, literature and photos:

References: https://en.wikipedia.org/wiki/Loskop_Dam;<http://www.middelburginfo.com/history/loskop-dam-history.html>**Photos:** DWA; <http://mapio.net/>; <http://www.panoramio.com/>; <http://www.travelfix.co.za/>