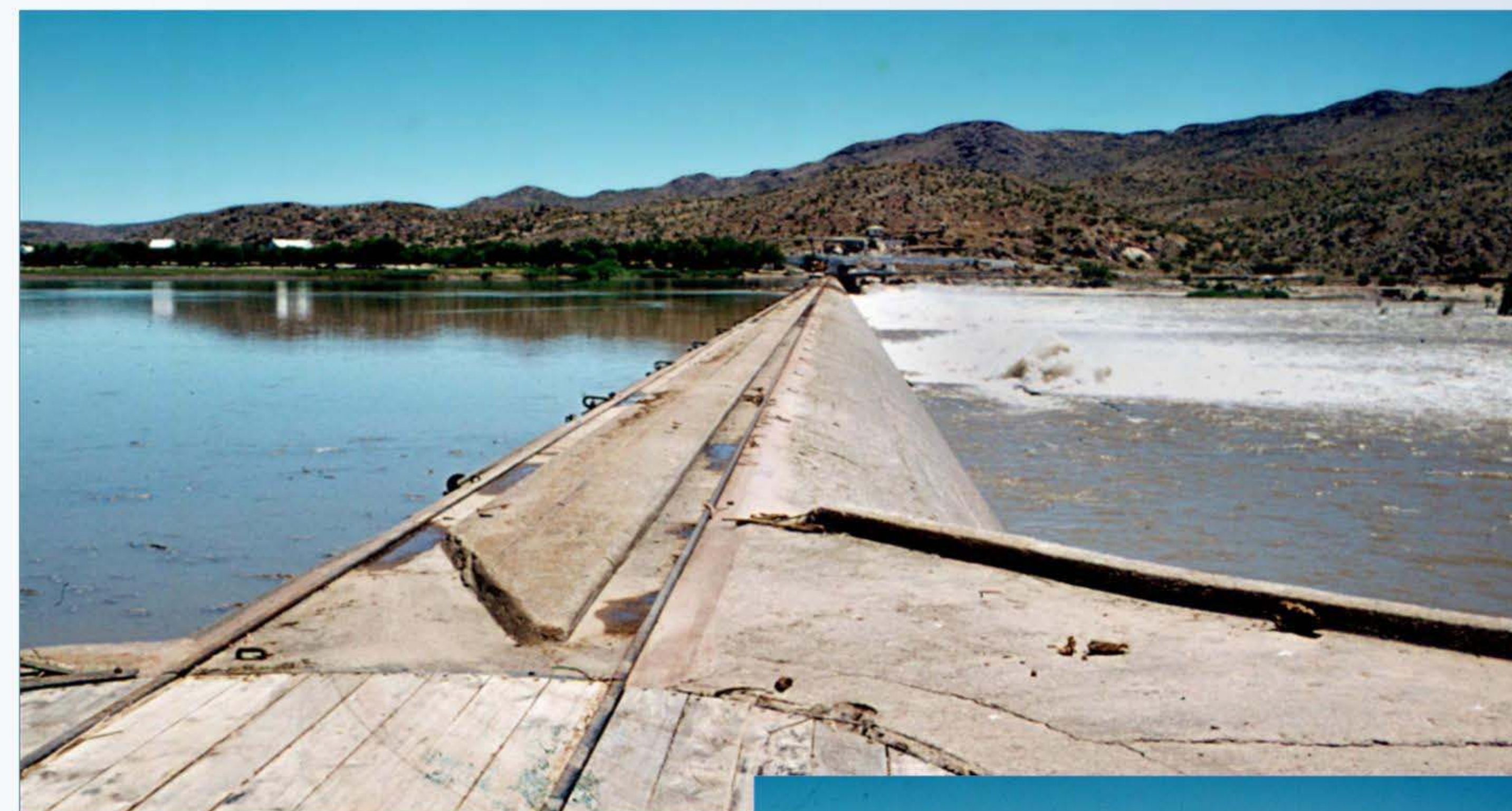


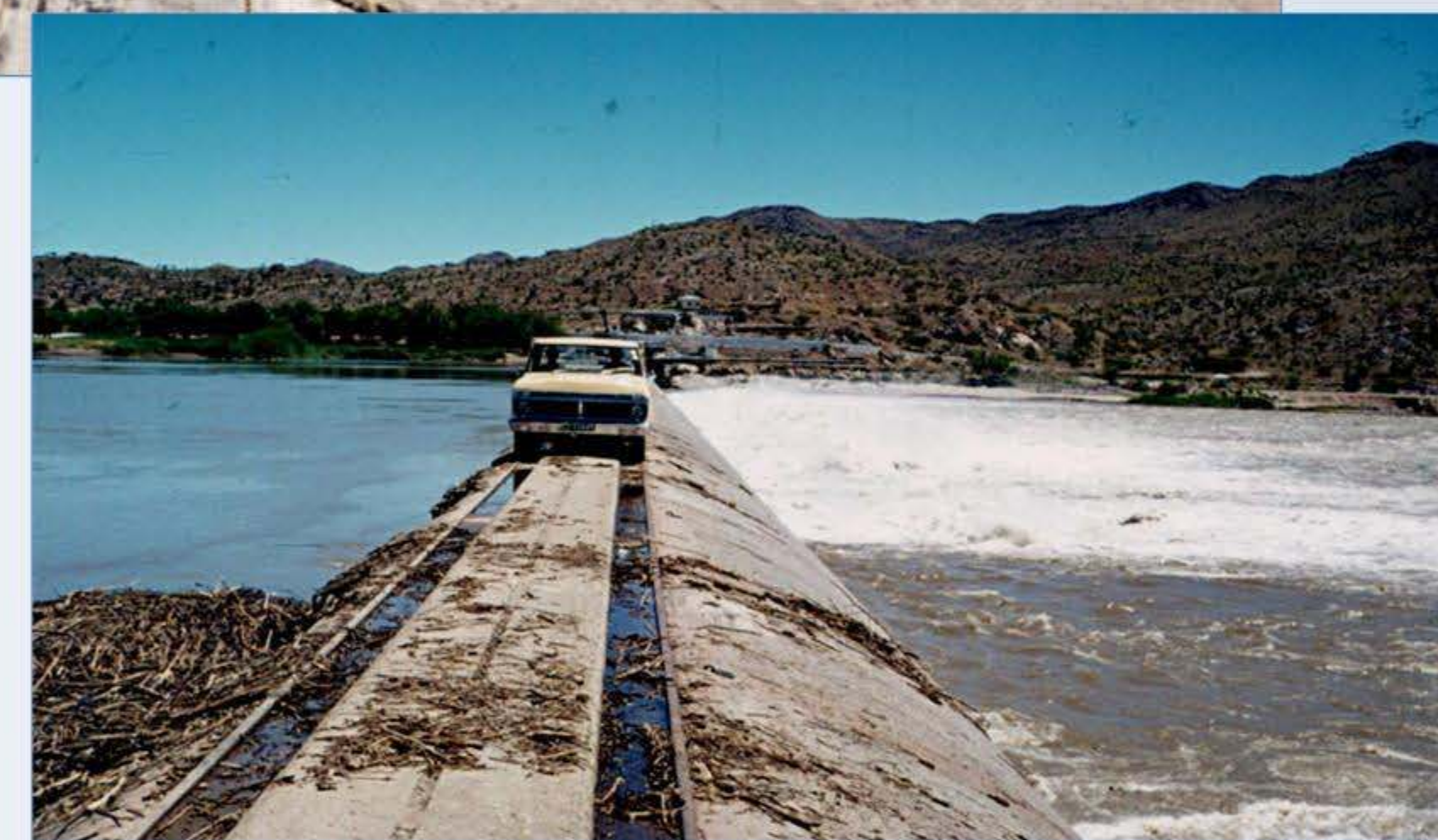
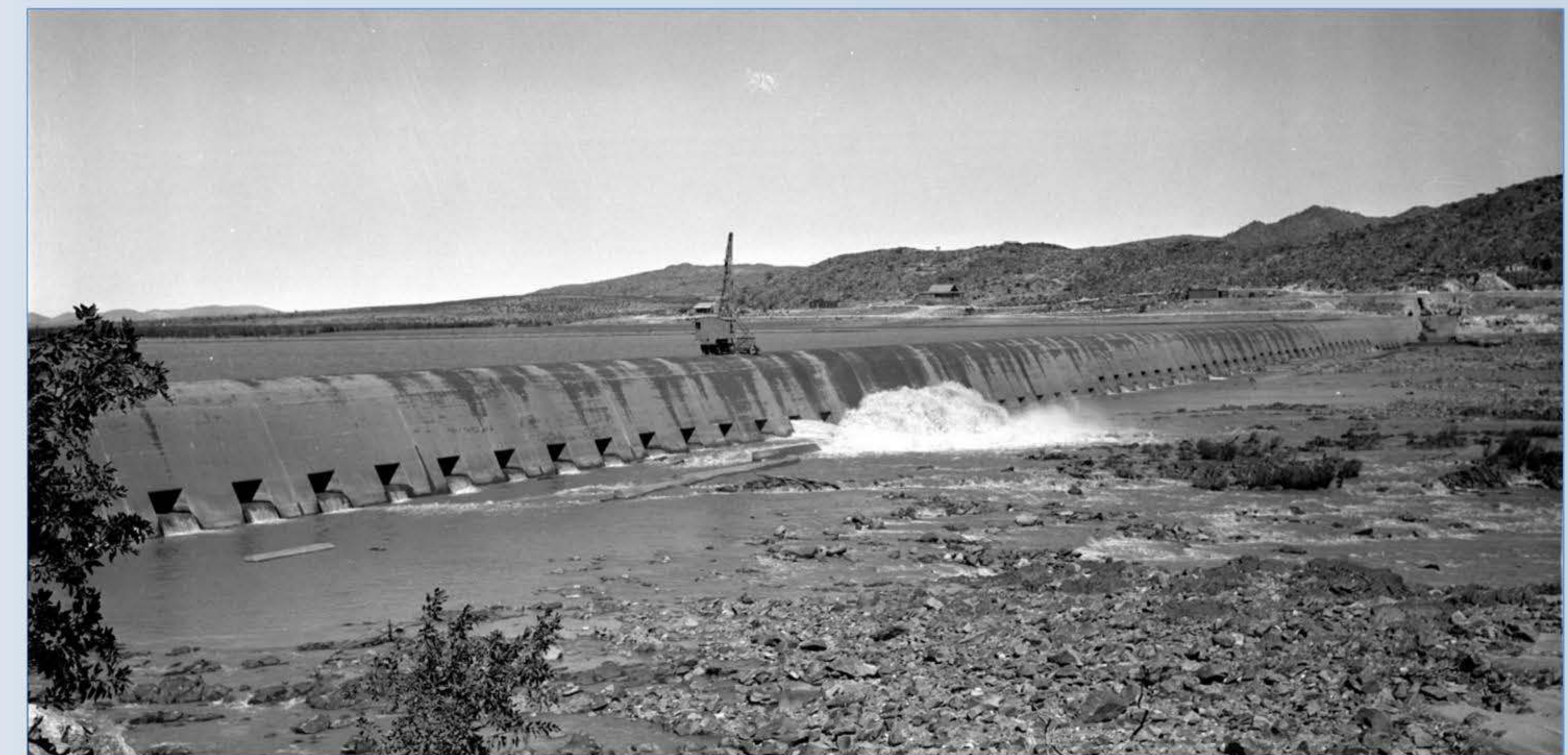


The dam is situated 35 km from Groblershoop. The construction formed part of an economic development plan to uplift the poor white Afrikaners at the time. The name of the dam derives from the Boegoe plant which was widely used in traditional medicine. Many Workers were ex-diamond miners and others who had been hit by the depression. The average wage for workers was 7s-6d per day (about 75cents). All the work was done with pick and shovel and wheelbarrows with the help of some donkeys. The coffer-dam was built of sand bags carried on men's backs And when each 50 meters of the coffer dam had been packed, work had begin on excavations for the foundations where In some places the foundations are deeper than what the wall is high. All work was done by hand and even the holes for explosives was drilled by hand. The wall took 55 045m<sup>3</sup> of concrete and the total Cost was £215 000.



1976

- 50% of the capacity can supply 360 000 domestic users with water for 1 year (150 liter/ person/day).
- The surface area is equivalent to 930 rugby fields.

2013 (<http://karoospace.co.za/wp-content>)

1936

**BOEGOEBERG DAM** (29.042045 S; 22.200872 E)

Completed: 1933

River: **Orange River.**Capacity: **19.9 million m<sup>3</sup>**Type of dam: **Concrete gravity dam.**Length of wall (top): **622 m**Length of dam (longest distance from wall to inflow): **30 km**Nearest town: **Groblershoop**Surface area: **742 ha**Water use: **Irrigation.**Capacity compared to Vanderkloof Dam, 340 km upstream: **< 1 %**

References, literature and photos:

**References:**[https://en.wikipedia.org/wiki/Boegoeberg\\_Dam](https://en.wikipedia.org/wiki/Boegoeberg_Dam);  
<http://www.boegoebergdam.co.za/pages/history.html>**Photos:** DWA