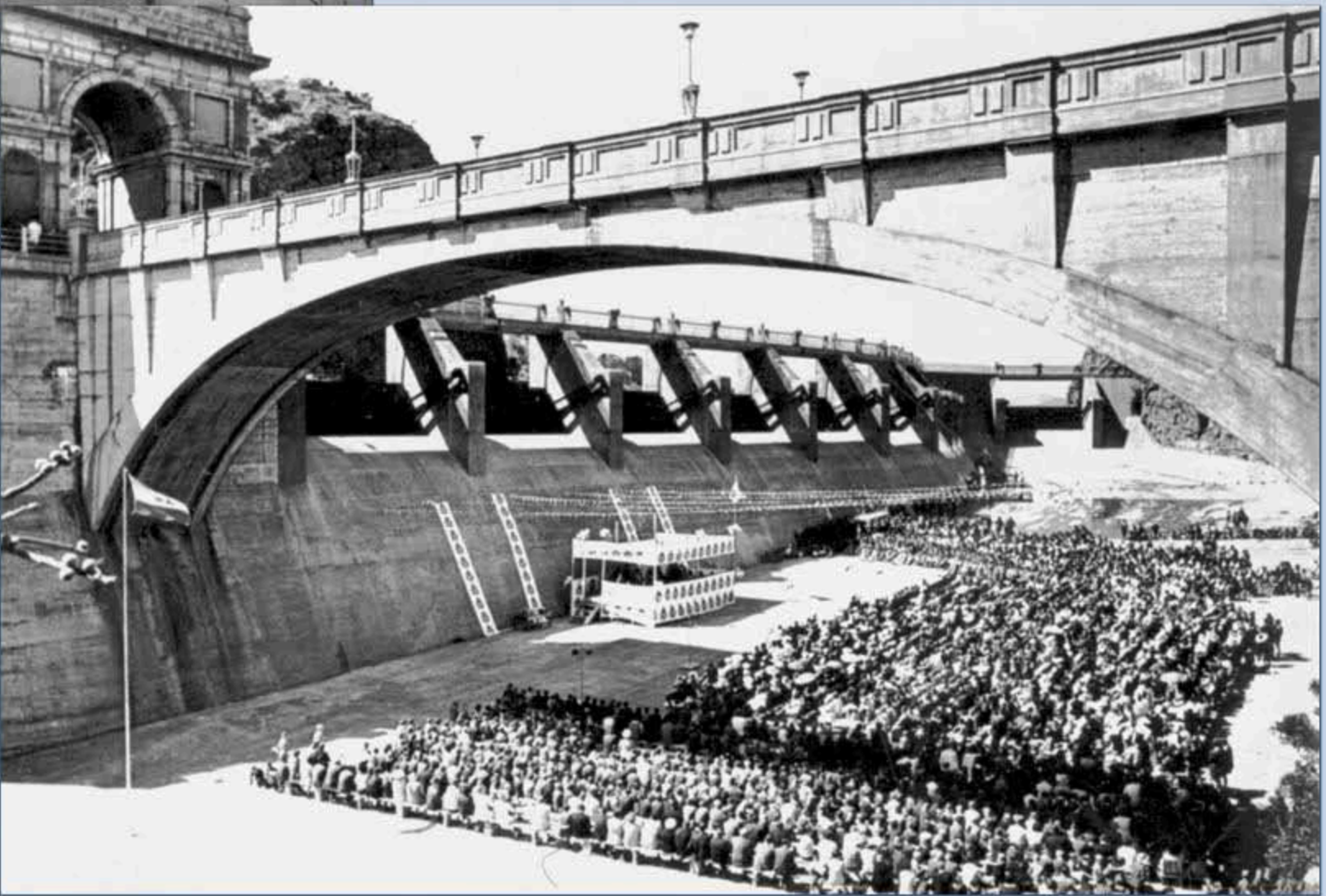
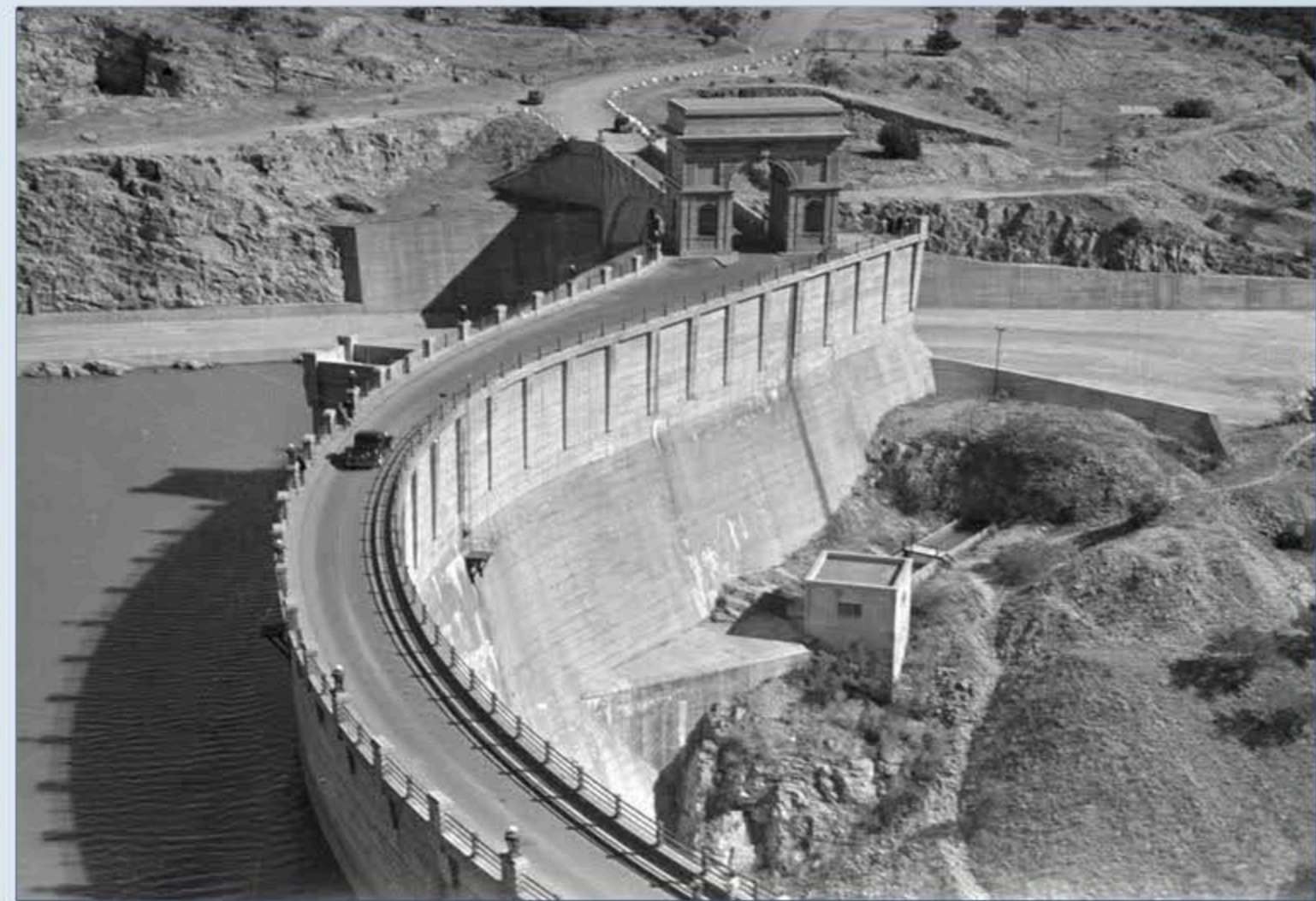


During construction: 1923



Opening ceremony: 1925



1950



Flood: 1941

HARTBEESPOORT DAM (25.7467 S; 27.89311 E)

Completed: 1923
Renovated: 1969

Type of dam: Concrete arch dam.

Capacity: 195 million m³

Length of wall (top): 149 m

Length of dam (longest distance from wall to inflow): 11 km

Nearest town: Hartbeeshoek

Surface area: 2062 ha

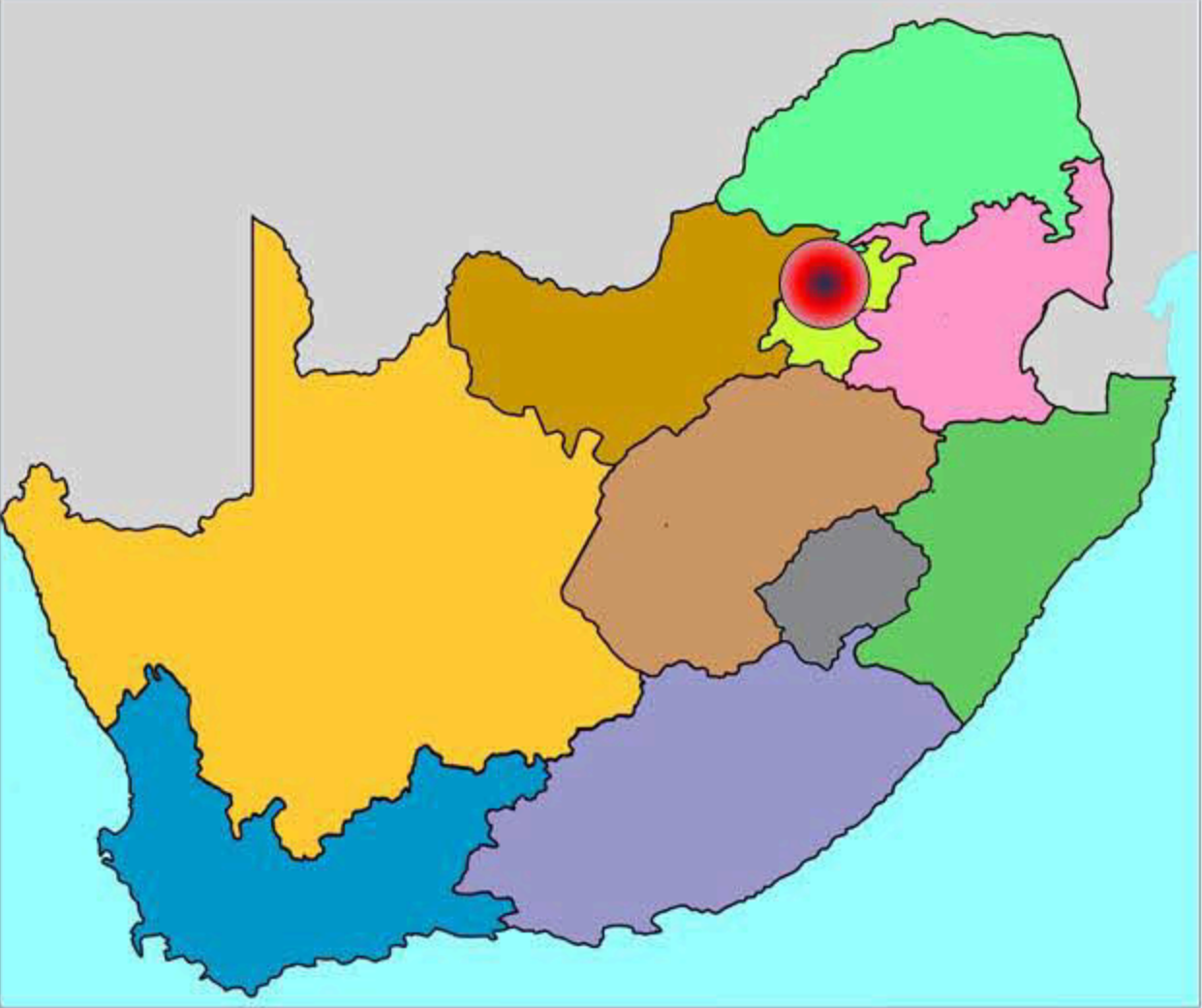
Water use: Domestic supply to Pretoria and adjacent towns. Irrigation.

Capacity compared to The Vaal : > 5 times smaller

River: Crocodile River

- 50% of the capacity can supply 1.8 million domestic users with water for 1 year (150 liter/person/day).
- The surface area is equivalent to 2454 rugby fields.

References, literature and photos:
Reference: Wikipedia (https://en.wikipedia.org/wiki/Hartbeespoort_Dam)
Literature: Van Vuuren, L. (2012). In the Footsteps of Giants. Exploring the history of South Africa's large dams.WRC Publication SP 31/12.
Photos: Department of Water Affairs: WAMTechnology cc



Spillway: 2011



Aquatic weed: Hyacinth growth at dam wall.

