

Takeoff Tower.



Three radial gates: 8.5 m wide.



The Wemmershoek Dam was planned in 1906 as part of the total water scheme for Cape Town,

### WEMMERSHOEK DAM (33.8328 S; 19.0827 E)

Completed: 1957

Type of dam: Rockfill with clay core.

Capacity: 58 million m<sup>3</sup>

Length of wall (top): 518 m

Length of dam (longest distance from wall to inflow): 3 km

Nearest town: Franschhoek

Surface area: 296 ha

Water use: Domestic supply to Cape Town and some towns in the Cape Winelands District.

Capacity compared to Theewaterskloof Dam (also supplying water to Cape Town) : > 8 times smaller

River: Discharges into the Wemmershoek River a tributary of the Great Berg River. Inflow from the Olifants and Drakenstein Rivers.

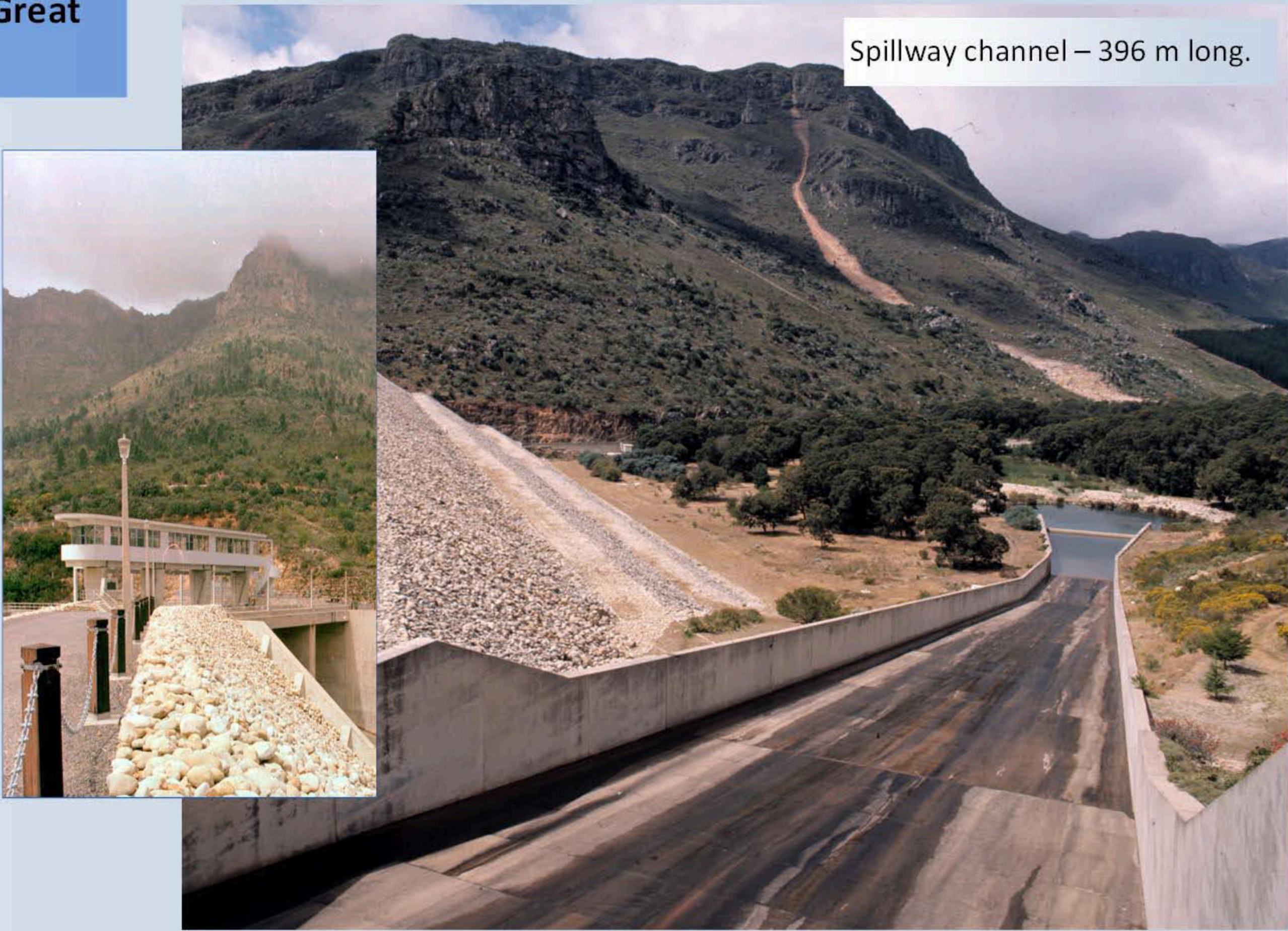
- 50% of the capacity can supply 530 000 domestic users with water for 1 year (150 liter/person/day).
- The surface area is equivalent to 352 rugby fields.



References, literature and photos:

**Literature:** Van Vuuren, L. (2012). In the Footsteps of Giants. Exploring the history of South Africa's large dams. WRC Publication SP 31/12.

**Photos:** Department of Water Affairs: WAMTechnology cc



Spillway channel – 396 m long.