



The Erfenis dam is the most centrally situated dam in the Free State and is halfway between Bloemfontein and Kroonstad. The Erfenis Dam is a popular boating and fishing venue with the Erfenis Nature Reserve on the south.

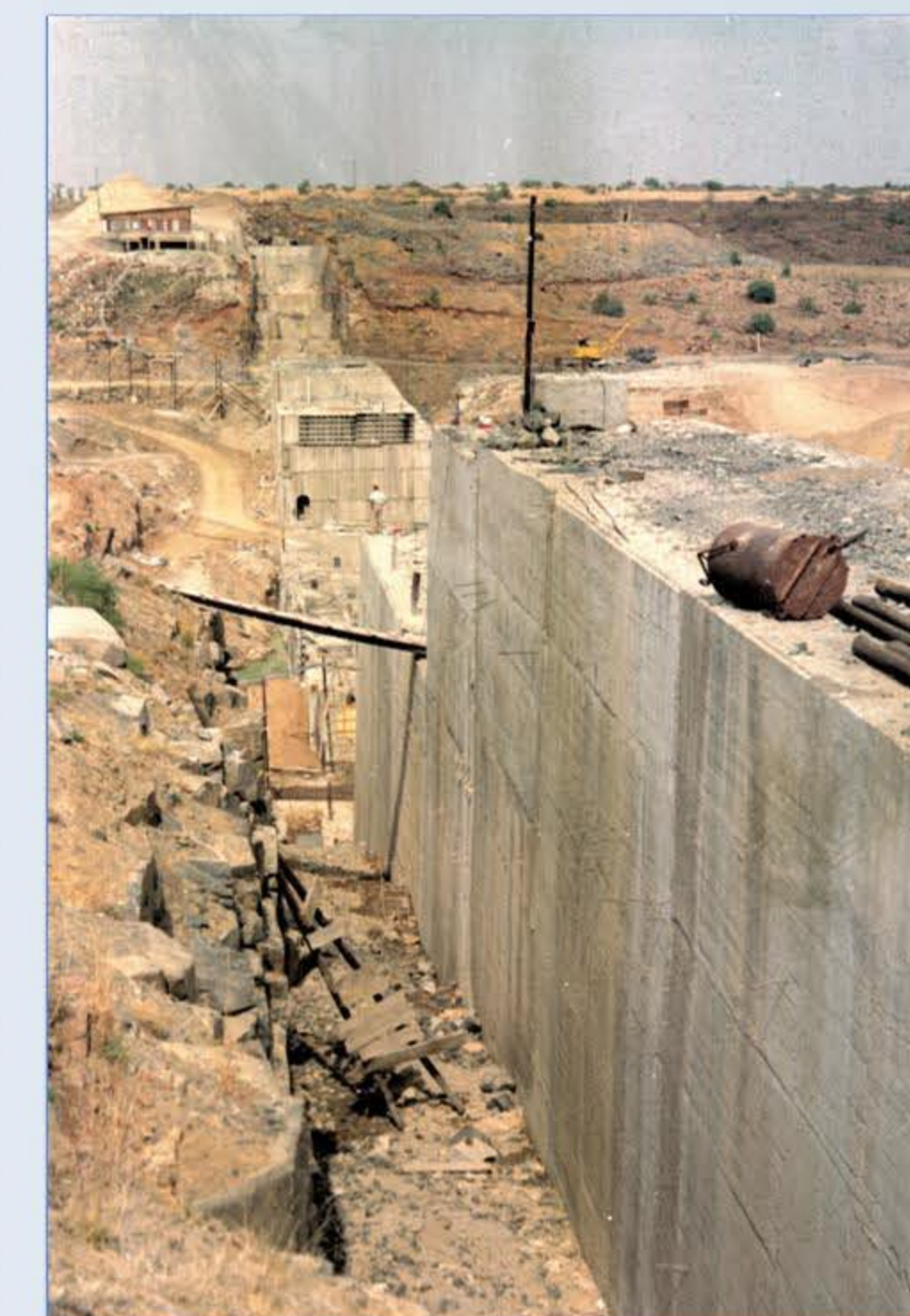
- 50% of the capacity can supply 1.9 mil domestic users with water for 1 year (150 liter/person/day).
- The surface area is equivalent to 4100 rugby fields.



January 2011



1956



1958



1967



## ERFENIS DAM (28.509548 S; 26.777522 E)

Completed: 1960

River: Groot-Vet and Klein-Vet Rivers .

Capacity: 212.3 million m<sup>3</sup>

Type of dam: Concrete gravity.

Length of wall (top): 2491 m

Length of dam (longest distance from wall to inflow): 15 km

Nearest town: Theunissen.

Surface area: 3291 ha

Water use: Irrigation.

Capacity compared to the Allemanskraal Dam 40 km away: Approximate the same.

Tel: 021 887 7161  
eMail: info@wamsys.co.za  
Web: www.wamsys.co.za

References, literature and photos:  
References: [https://en.wikipedia.org/wiki/Erfenis\\_Dam](https://en.wikipedia.org/wiki/Erfenis_Dam);  
Photos: DWA; <https://www.flickr.com/photos/drikusjacobs>