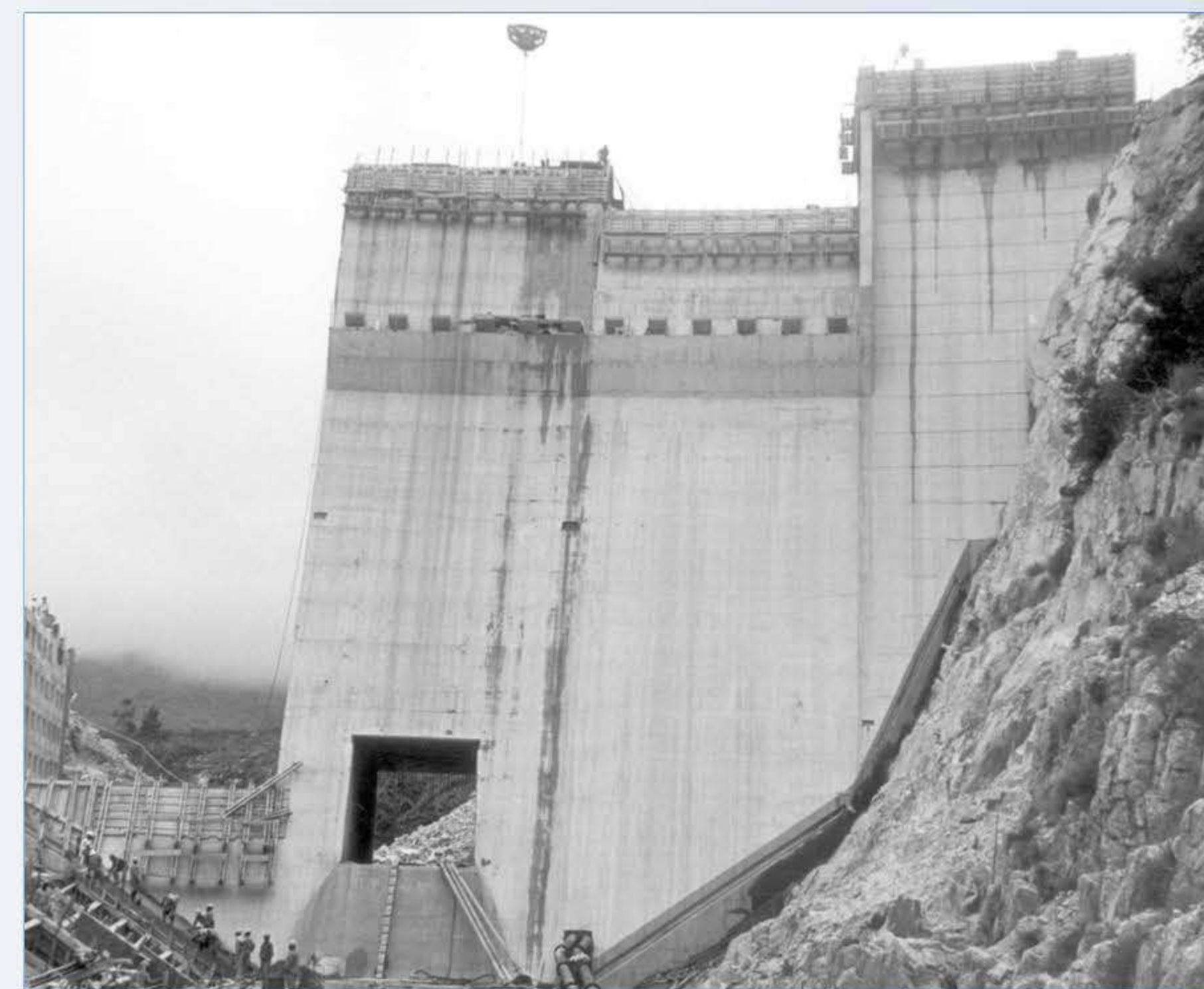


2007



1986



2014

The Kogelberg Dam is part of the Palmiet Pumping Scheme and Rockview Storage Dam of ESCOM which consists of two 200MW units at an installed capacity of 400MW. For generating purposes, water is released from the upper Rockview Dam to the two reversible pump turbines located 60 metres below ground level to the Kogelberg Dam. The inflow to the dam is at the outflow of the Applewaite Dam on the Palmiet River.



Foundation



## KOGELBERG DAM (34.216145 S; 18.971857 E)

Completed: 1986

River: Palmiet River .

Capacity: 19.3 million m<sup>3</sup>

Type of dam: Concrete gravity and arch.

Length of wall (top): 850 m

Length of dam (from dam wall to inflow): 3.1 km

Nearest town: Grabouw.

Surface area: 155 ha

Water use: Domestic and hydro-electricity.

Capacity compared to the Rockview Dam 2 km away: 1.2 times larger

References, literature and photos:  
References: [https://en.wikipedia.org/wiki/Kogelberg\\_Dam](https://en.wikipedia.org/wiki/Kogelberg_Dam);  
Photos: DWA; Google Earth - Panoramio

Tel: 021 887 7161  
eMail: [info@wamsys.co.za](mailto:info@wamsys.co.za)  
Web: [www.wamsys.co.za](http://www.wamsys.co.za)