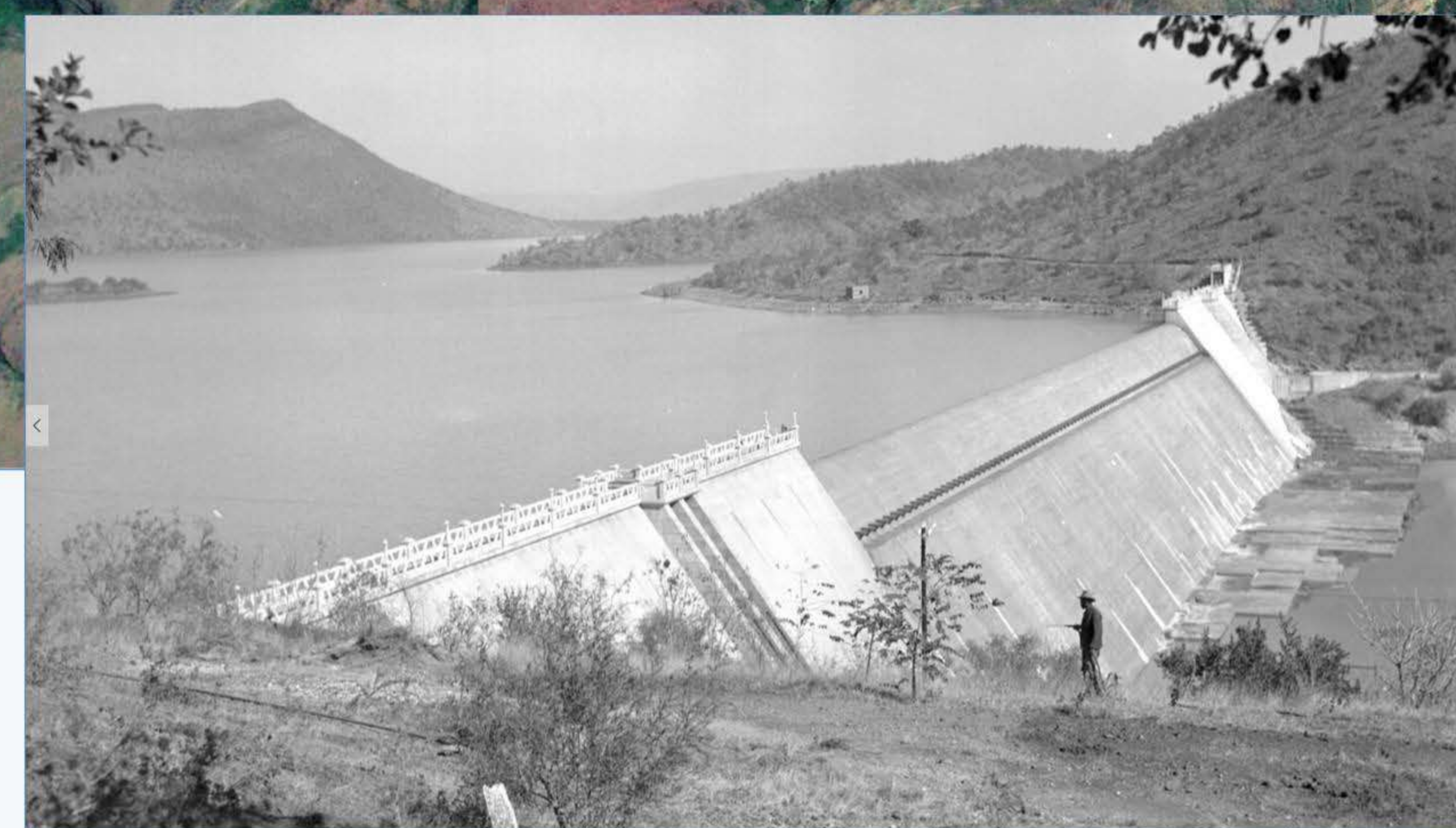


1940



1947



1961

## LOSKOP DAM (25.415315 S; 29.359464 E)

Completed: **1938**; Raised: **1979**

River: **Olifants River.**

Capacity: **361.5 million m<sup>3</sup>**

Type of dam: **Concrete gravity – arch dam.**

Length of wall (top): **497 m**

Length of dam (longest distance from wall to inflow): **14 km**

Nearest town: **Groblersdal – 28 km. Middelburg – 38 km.**

Surface area: **2477 ha**

Water use: **Irrigation.**

Capacity compared to the Flag Bosielo Dam also on the Olifants: **2 times larger.**

References, literature and photos:

**References:**[https://en.wikipedia.org/wiki/Loskop\\_Dam](https://en.wikipedia.org/wiki/Loskop_Dam);

<http://www.middelburginfo.com/history/loskop-dam-history.html>

**Photos:** DWA; <http://mapio.net/>; <http://www.panoramio.com/>; <http://www.travelfix.co.za/>