

## Water and Sanitation in the News

### Water, Electricity Losses Cost More than R6 billion

Finance Minister Pravin Gordhan has announced a number of initiatives to help underperforming municipalities improve revenue collection, record keeping and infrastructure spending.

A significant number of municipalities fail to collect the money owed to them, while the valuation rolls on which property rates are based are often out of date. Many municipalities are also plagued by illegal electricity and water connections, due to ailing infrastructure and poor maintenance. The eight metropolitan municipalities alone forfeit R6.5 billion annually through losses in water and electricity.

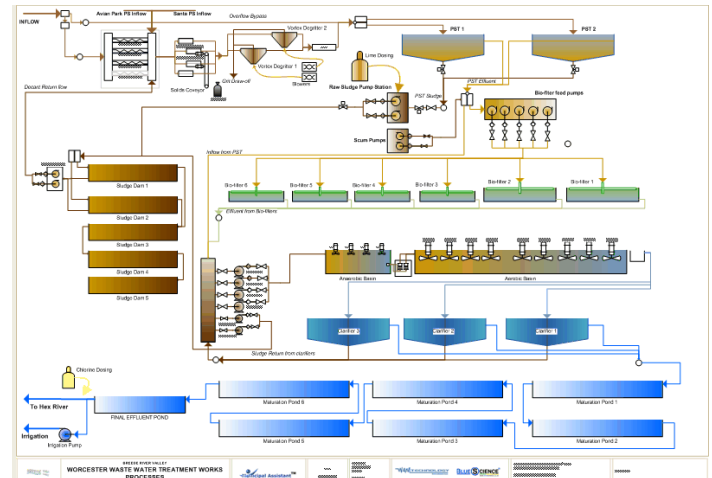
Gordhan said if municipalities cut these losses by a mere 4.6%, it would already make up for the R300 million reduced municipal allocation stated in his Budget Review. **He said municipalities should spend between 6% and 8% of their operating budgets on maintenance and repairs. In reality, most of them only spend about 3% on these.**

Municipalities will receive a subsidy of R335 per household per month to provide free basic services to over 9 million households, but this is significantly higher than the reported 5.3 million who have reportedly received such services. "This shortfall must be addressed," Gordhan said.

Sources: *Fin24, 25 Feb 2016*

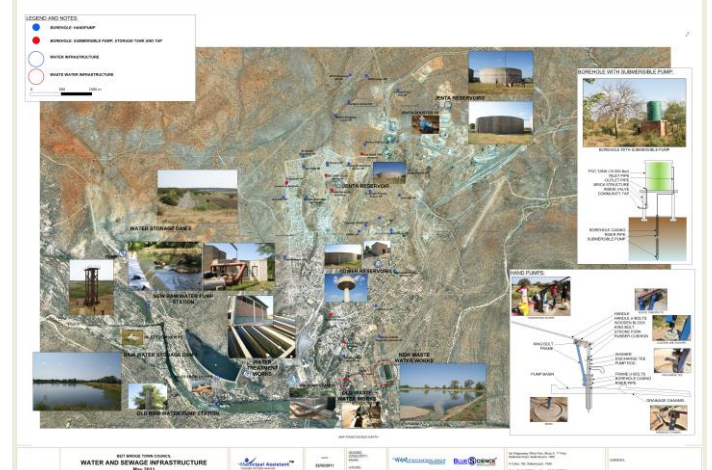
**WAMTechnology** has been providing water asset and operations management systems and associated services to municipalities for the past 9 years. We have a working system, The **Municipal Assistant™**, developed for local operating conditions to assist users at WTW and WWTW in planning, budgeting and managing tasks related to operations and maintenance of infrastructure. We train, coach, mentor and assist with the ultimate objective of empowering the user to assume ownership of the system.

After doing assessments at more than 200 water and waste water works, we found that very few works had **Process Flow and Layout Drawings** available. Such drawings are vital in assisting with effective water and waste water treatment plant management by providing a clear understanding of the sequences, processes and paths of water flow. The drawings we provide our clients indicate a diagrammatic display of the processes and the inter connections between the components of the facility, which are critical for process management, as well as overall water management strategies.



In addition, we also provide **Water Cycle Diagrams** to improve the knowledge and understanding of water and wastewater networks and services provided to communities. In the era where water conservation and demand management is becoming compulsory to ensure the management of supply risks, the water cycle diagrams can be used to communicate and improve the knowledge of users of the complexity and infrastructural requirements of the water and sanitation services. All the process, layout and water cycle diagrams can be printed on A1 and A0 format and be used and displayed at the treatment facilities. The Water Cycle Diagrams can be printed in Z-fold format and distributed with municipal accounts to users.

Besides technical drawings, we also provide geographic maps and GIS plotting of town or community water infrastructure.



CONTACT US: Tel: +27 (0)21 887 7161

WAMTech are specialists in implementing technology systems for improved governance, focussing on Water and Public Health Information Systems

Visit our websites:

[www.wamsys.co.za](http://www.wamsys.co.za)  
[www.municipalassistant.co.za](http://www.municipalassistant.co.za)  
[www.ewisa.co.za](http://www.ewisa.co.za)